



Shetland Road, London, E3

BUTLER & STAG



**Guide Price - £375,000 to £400,000**  
**Nestled on the tranquil Shetland Road in Bow, this two-bedroom duplex flat offers a blend of comfort and convenience. Spanning an impressive 820 square feet, the property boasts a spacious reception room that is bathed in natural light, thanks to its large south-west facing windows. This inviting space is perfect for both relaxation and entertaining.**



## Leasehold

- Two Bedroom
- 820 Sq/Ft Internal Living Space
- The Vibrant Roman Road A Moments Walk Away
- Victoria Park Nearby
- Duplex Apartment
- Low Rise Development
- Chain Free
- Fantastic Opportunity To Invest

The flat features two well-proportioned bedrooms, providing ample space for rest and privacy. The primary bedroom, with its generous dimensions, ensures a peaceful retreat at the end of the day.

Situated in a good location, residents will appreciate the proximity to the picturesque Victoria Park and the vibrant Roman Road, which offers a variety of shops, cafes, and local amenities. The quiet road enhances the appeal of this home, making it an ideal sanctuary in the bustling city.

This purpose-built flat is perfect for those seeking a comfortable living space in a desirable area. Whether you are a first-time buyer or looking to invest, this property presents an excellent opportunity to enjoy the best of London living whilst adding your own stamp to a solid property in a prime location.

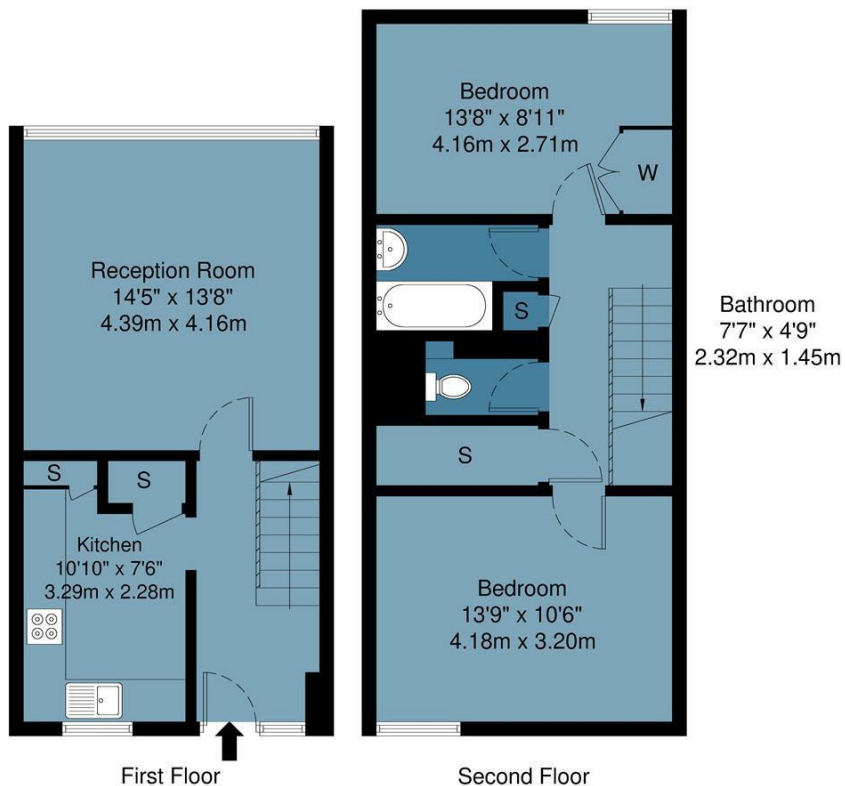




## Gullane House, E3

Approx Gross Internal Area : 76.2 sq m / 820 sq ft

**BUTLER & STAG**



Measurements are approximate and for illustration purposes only. While we do not doubt the accuracy and completeness, we advise you conduct a careful independent assessment of the property to determine monetary value.  
© @ Maison VUE | [www.maisonvue.com](http://www.maisonvue.com)

**IMPORTANT NOTICE** - These particulars have been prepared in good faith and they are not intended to constitute part of an offer or contract. We have not performed a structural survey on this property and the services, appliances and specific fittings have not been tested. All photographs, measurements, floor plans and distances referred to are given as a guide and should not be relied upon.

**BUTLER & STAG**

☎ 020 8102 1236

🏠 508 Roman Road, Bow, London, E3 5LU

✉ [bow@butlerandstag.com](mailto:bow@butlerandstag.com)

[www.butlerandstag.uk](http://www.butlerandstag.uk)